



# Wilson Homes & Wilson Multi Policy Overview

## External Texture

**23.0**  
**Revision #03**  
**Effective 01 June 2024**

## SCOPE OF WORKS

### OVERVIEW

23.0A	Overview & Purpose
23.0B	Policy Overview – Dulux Trade Representatives North & South
23.0C	Policy Overview - Texture Specification
23.0D	External Texture Specification
23.0E	Method of Measurement for Rates
23.0F – Annexure A	Wilson Homes Schedule of Rates
23.0G – Annexure B	Wilson Homes Complaint Applications
23.0H – Annexure C	Dulux Supporting Documentation

### **23.0A Overview & Purpose**

The purpose of this specification document is to clearly set out the quality standards and paint application requirements of Wilson Homes and Wilson Multi.

The information contained within the Specification is for the benefit of all painters. The information is to provide Texture Coat Applicators guidance and tips with surface preparation and Texture Coat System application to ensure that all homes are finished to a consistently high standard.

#### **Site Access, Hours & WHS**

Access to dwellings is provided by Wilson Homes standard builders key. Ensure site is secure prior to leaving, including closure of site builders fence if you are the last trade on site.

The site working hours are directed by local councils and may vary across Tasmania. All trades must adhere to the working timeframes set out by Local Council.

If in doubt seek clarification with the Site Supervisor or Area Manager.

All contractors are to be WHS Compliant.

Compliance is to be undertaken annually, which generally aligns to the Contractors Insurances. All WHS Compliance requirements is directed through the WH&S Manager.

## Dry Wall Exsulite Distribution

Exsulite wall board and accessories will be distributed by  
Hobart and Launceston Trade Centres

### WET AREA DISTRIBUTION

#### NORTHERN TASMANIA

**Dulux Trade Centre Launceston**  
393 Westbury Road  
Prospect Tasmania 7250  
**Phone** (03) 6344 8744  
**Email** [Launceston.dtc@dulux.com.au](mailto:Launceston.dtc@dulux.com.au)

**Inspirations Pain Launceston**  
208 York Street Launceston  
**Phone** (03) 6334 1233  
**Email** [lanuceston@insptas.com.au](mailto:lanuceston@insptas.com.au)

**George Town Hardware**  
Hicky's Hardware ITS  
100 Victoria Street George Town  
**Phone** (03) 6311 0779

**Inspirations Paint Devonport**  
45 Don Road Devonport  
**Phone** (03) 6424 2953  
**Email** [devonport@insptas.com.au](mailto:devonport@insptas.com.au)

**Inspirations Paint Cooee**  
24D Bass Hwy Cooee  
**Phone** (03) 6431 6165  
**Email** [cooee@insptas.com.au](mailto:cooee@insptas.com.au)

#### SOUTHERN TASMANIA

**Dulux Trade Centre Hobart**  
47 Burnett Street Hobart  
**Phone** (03) 6234 6522  
**Email** [Hobart.dtc@dulux.com.au](mailto:Hobart.dtc@dulux.com.au)

**Inspirations Paint Kingston**  
38 Merton Vale Court Kingston  
**Phone** (03) 6229 1100  
**Email** [kingston@pos.insp.com.au](mailto:kingston@pos.insp.com.au)

**Inspirations Paint Mornington**  
299 Cambridge Road Mornington  
**Phone** (03) 6244 4496  
**Email** [mornington@pos.insp.com.au](mailto:mornington@pos.insp.com.au)

## **23.0B Policy Overview - Dulux Trade Representatives North & South**

### **Southern Point of Contact**

Scott Jackman

Key Account Manager

**Phone** 0407 484 231

**Email** [scott.jackman@dulux.com.au](mailto:scott.jackman@dulux.com.au)

### **Northern Point of Contact**

Mark House

Key Account Manager

**Phone** 0402 906 307

**Email** [mark.house@dulux.com.au](mailto:mark.house@dulux.com.au)

## **23.0C Policy Overview – Texture Specification**

## 23.0D External Texture Specification

### External Texture Works – Brickwork

#### Dulux Acratex

- 2 x Coats Acra build course 3002
- 1 x Coat Green render sealer
- 1 x Coat Acratex Coventry medium (Tinted to Colour)
- 2 x Coat Acratex Acrashield Matt (15 Year Warranty)

### EXTERNAL TEXTURE WORKS- HEBAL (Non Standard for Wilson Homes)

#### DULUX ACRATEX

- 2 x Coats Acrabuild AAC Lowbuild (Blue Mesh Embedded Between Coats)
- 1 x Coat Acratex Coventry Medium (Tinted to Colour)
- 2 x Coat Acratex Acrashield Matt (15 Year Warranty)

### EXTERNAL TEXTURE WORKS- BLUEBOARD (Non Standard for Wilson Homes)

#### Blueboard installed in accordance with Manufacturers Specifications

- DULUX Acra Patch 500 to Joints with Tape
- 1 x Coat Dulux Fast Coat
- 1 x Acratex Coventry Medium (Tinted to Colour)
- 2 x Coat Acratex Acrashield Matt (15 Year Warranty)

### External Texture Works – Foam

#### Dulux Acratex

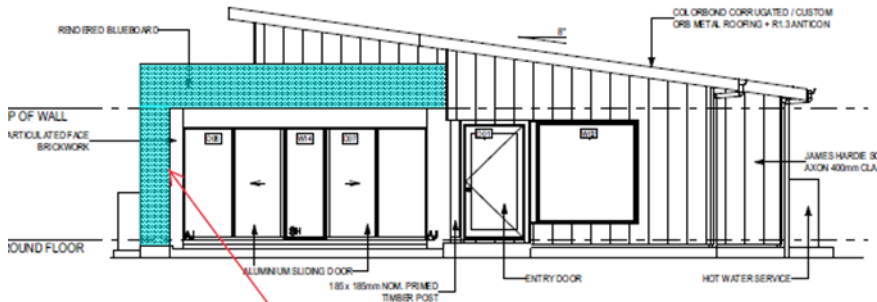
#### Exsulite – Smart Façade System

- Installation is delivered through Exsulite trained installers
- Installation in accordance with Exsulite Specifications & Installation Manual
- Breathable wall wrap membrane fixed to stud cavity
- Cavity spacer fixed to stud framing
- EPS Panel
- Angled starter channel with weep hole under
- 2 x coats renderwall P400 and Exsulite mesh embedded between coats
- 1 x coat green render sealer
- 1 x coat Coventry medium (Tinted to colour)
- 2 x coat acratex acrashield matt (15 year warranty)

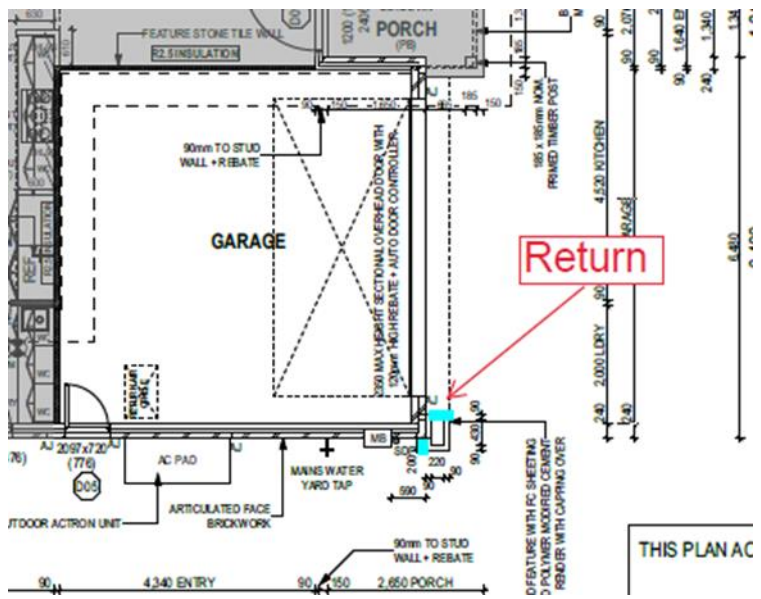
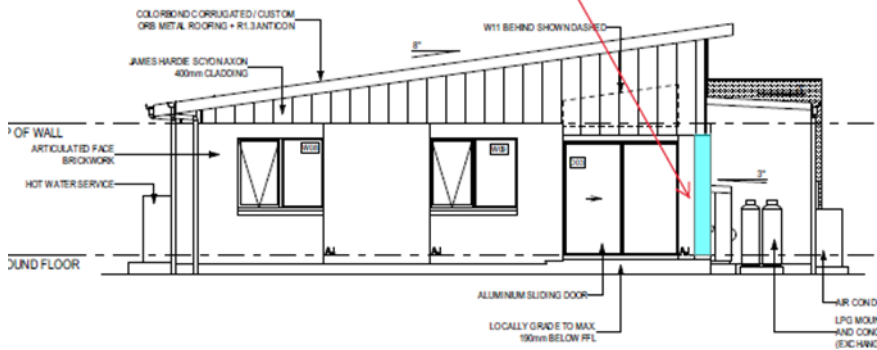
### 23.0E Method of Measurement for Rates

Surface area of wall to include window & door openings to allow for return to windows and windows reveals.

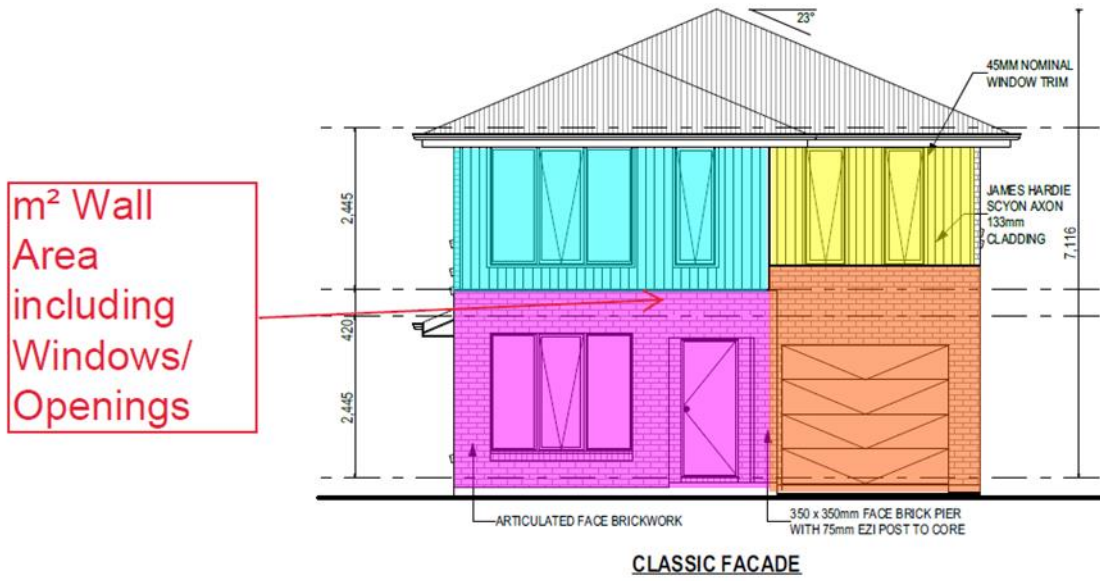
#### Scenario A – Parapet Façade Feature



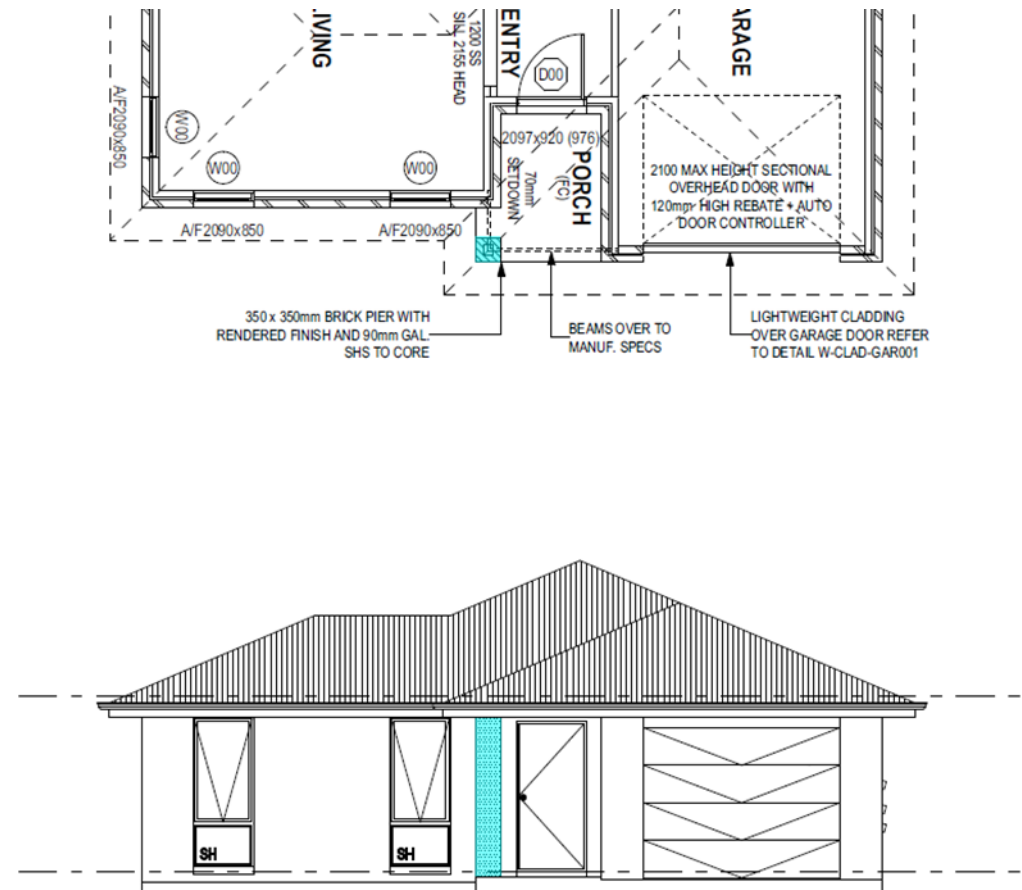
m<sup>2</sup> of Wall Area (Including Returns)



**Scenario B – Typical Wall Detail**

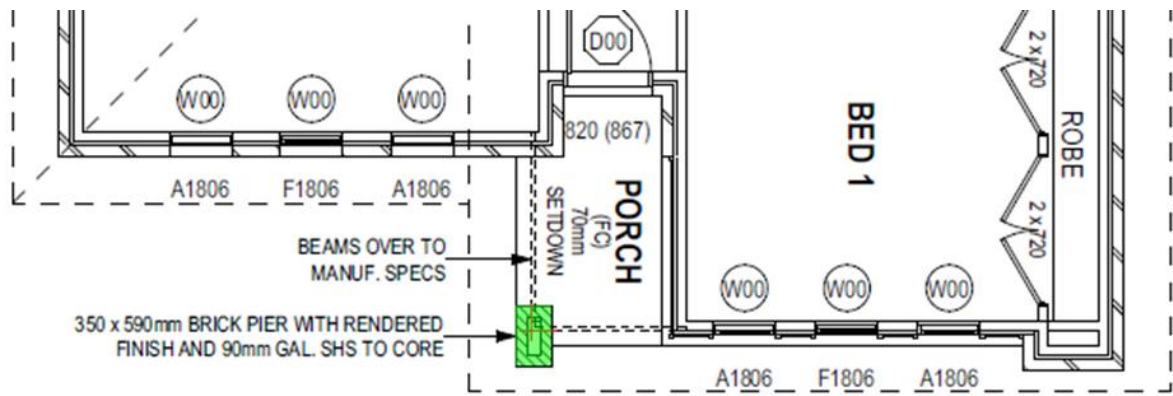


**Scenario C – 350 x 350 Brick Column**





**Scenario D – 350 x 590 Brick Column**

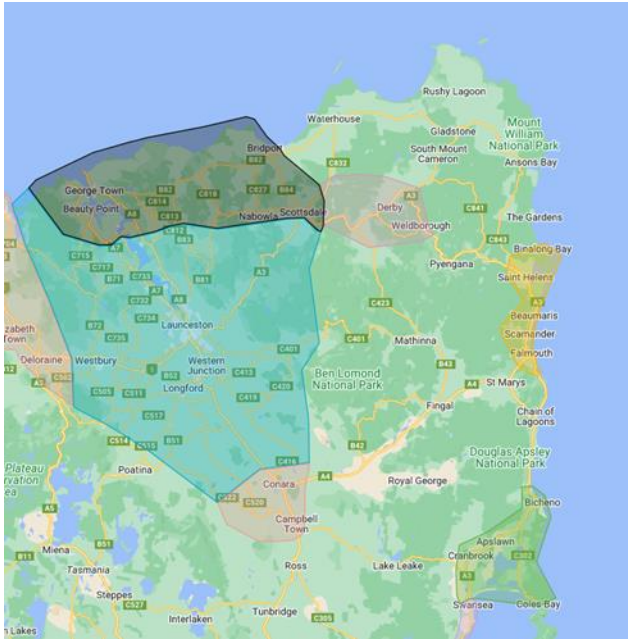


### 23.0F Annexure A - Wilson Homes Schedule of Rates

NOTE: All information provided by Wilson Homes is private & confidential – no information is to be shared with any other party.

<b>WILSON HOMES SCHEDULE OF RATES WORKS REQUIRED</b>		<b>Ex GST</b>
23.0 TEXTURE EXTERNAL	TEXTURE COAT TO BRICKWORK	\$95.00m <sup>2</sup>
23.0 TEXTURE EXTERNAL	TEXTURE COAT TO 350 x 350 BRICK COLUMN	\$290.00lm
23.0 TEXTURE EXTERNAL	COAT TO 350 x 590 BRICK COLUMN	\$335.00lm
23.0 TEXTURE EXTERNAL	TEXTURE COAT TO BLUEBOARD	\$95.00m <sup>2</sup>
23.0 TEXTURE EXTERNAL	TEXTURE COAT 100MM or 75MM EXSULITE	\$165.00m <sup>2</sup>

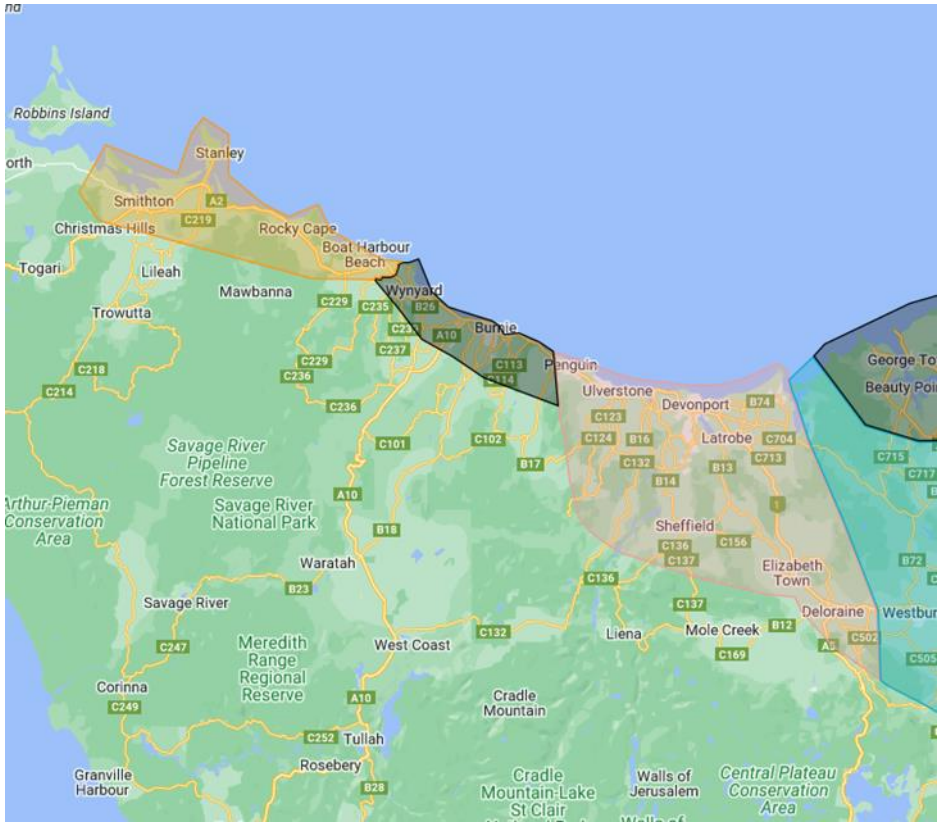




## Launceston Area

- TL10- Launceston
- TL20- Scamander
- TL30- Braxholm
- TL40- George Town
- TL50- Campbell Town

**Compliant Contractors- TBA**



**North West**

- TB10- North West
- TB20- Burnie
- TB30- Smithton

**Compliant Contractors- TBA**

## **23.0H Annexure C – DULUX Supporting Documentation**

### **Pricing Documents**

01 DULUX Acratex Master Price List- 1 May 2023

02 EXSULITE TAS Pricing- 1st June 2023

03 DULUX- North/ South Tasmania Foam Delivery Pricing- 2023

### **Supporting Documentation**

AcraTex Coating Test Data to NCC 2019

EXSULITE Flyer- V4

EXSULITE Thermal R Value

EXSULITE BAL Cavity

EXSULITE Cavity Code Mark Certificate CM40264-I01-R00

EXSULITE Construction Drawing Manuals

EXSULITE Specification & Installation Manual